

# LHC ranked as one of best small hospitals in nation

By Liz Kearney  
Enterprise Staff Writer

Livingston HealthCare was recognized recently as one of the top critical access hospitals in the United States.

LHC's ranking among the top 20 CAH hospitals was recognized by the National Rural Health Association. The ranking is based on a study performed by a national health care research firm, iVantage Health Analytics, an LHC news release said.

The rankings are published in iVantage's Health Analytics Hospital Strength Index.

The Index tracks perfor-

mance metrics for more than 4,000 acute care hospitals, including over 2,000 rural and critical access hospitals. It aggregates data for more than 70 indicators, compiled into nine categories, and ranks hospitals against national peer groups using a 0-100 scale for all performance categories.

It's the first rating system to include the country's nearly 1,300 critical access hospitals, a federal designation for small rural hospitals with 25 inpatient beds or less, the release said.

LHC received a 99.5 overall score, compared to a median score of 57.46 for all

other Montana CAHs, and a hospital strength index rank of 100.0 among the state CAHs.

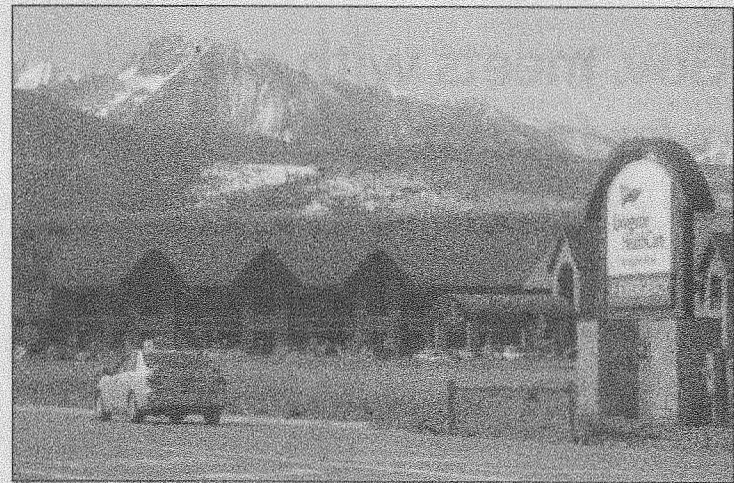
LHC scored well across the board, including high rankings in quality, patient safety, outcomes, affordability and financial stability, among other categories. In a number of cases, it received above-90 percentile rankings, and as high as 98.

"Livingston HealthCare has long been focused on serving its community well," Bren Lowe, CEO of LHC said in the release. "This recognition represents our commitment to provide the highest level of quality and care to

those that we serve."

Last fall, iVantage Health Analytics and the NRHA recognized LHC for overall excellence in outcomes and financial strength as a Top 100 critical access hospital, the release said. To qualify, a hospital's performance had to rank in the top quartile of all acute care hospitals in the U.S.

"These top 100 critical access hospitals exhibit a focused concern for their community benefits and needs, regardless of scale, reimbursement and people's ability to pay," Michael Topchik, senior vice president of iVantage Health Analytics,



Enterprise photo by Justin Post  
The entrance of Livingston HealthCare is pictured Thursday morning.